



WHAT IS TYPE 1 DIABETES?

A DISEASE THAT AFFECTS HOW THE BODY USES **GLUCOSE (=SUGAR)** TO PRODUCE **ENERGY**

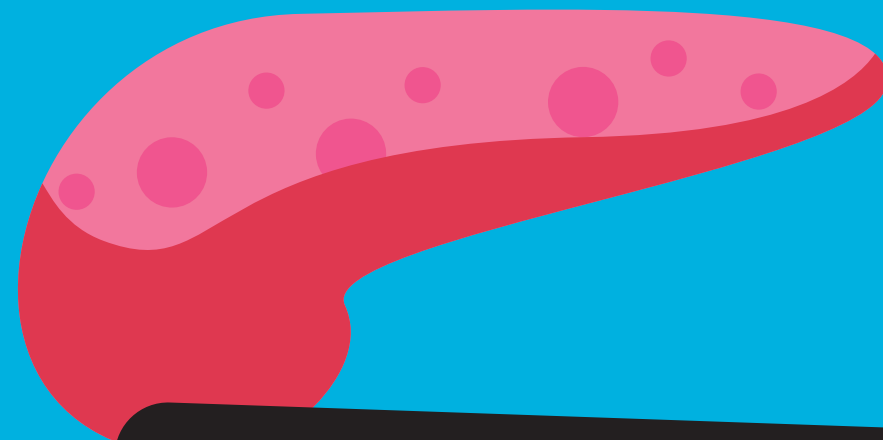
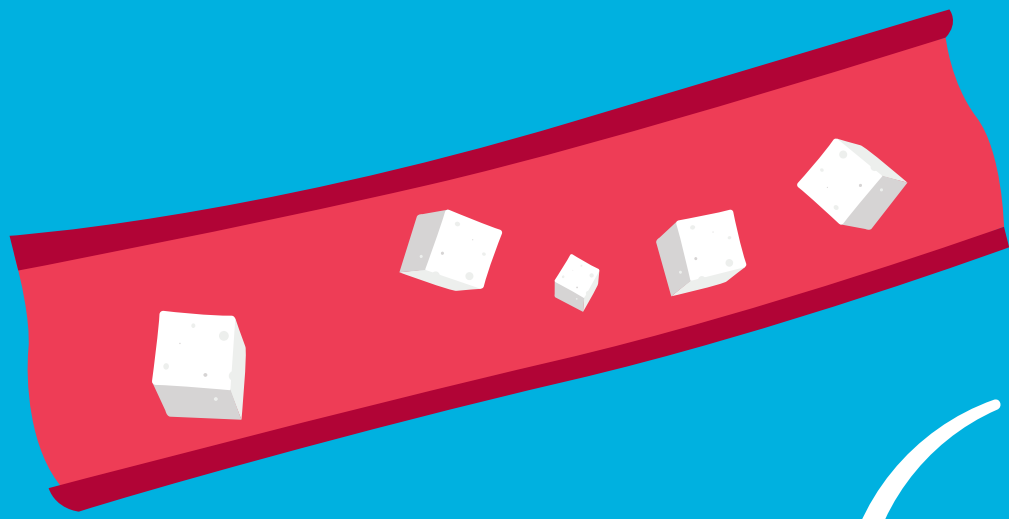
WHAT HAPPENS WHEN YOU DO NOT HAVE TYPE 1 DIABETES



THE GLUCOSE IN THE FOOD GOES INTO YOUR BLOODSTREAM AFTER EATING



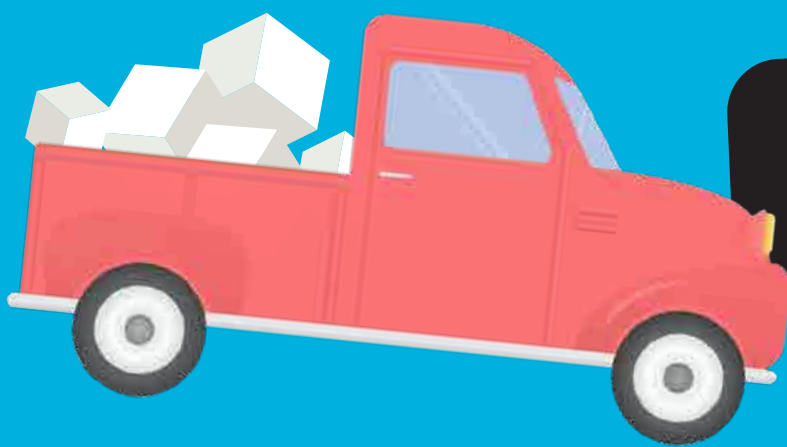
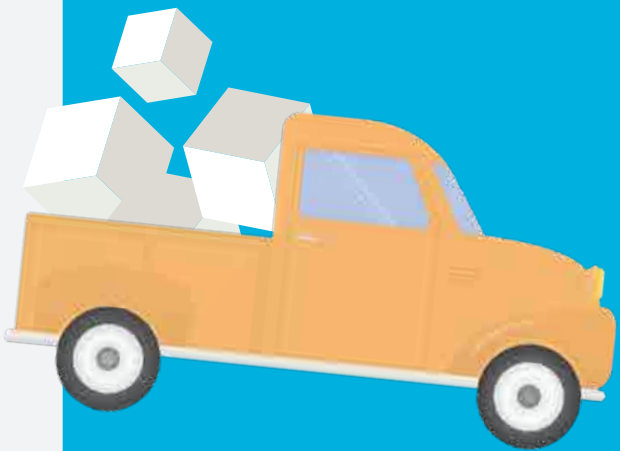
WHAT IS TYPE 1 DIABETES?



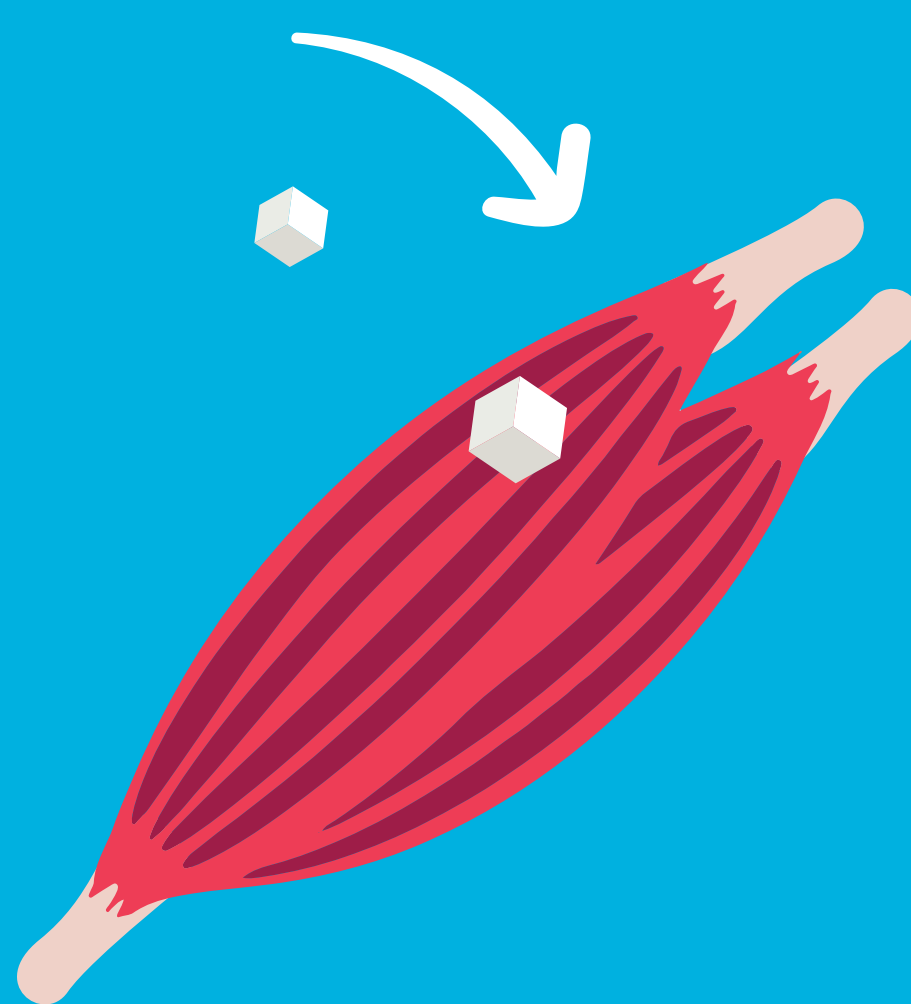
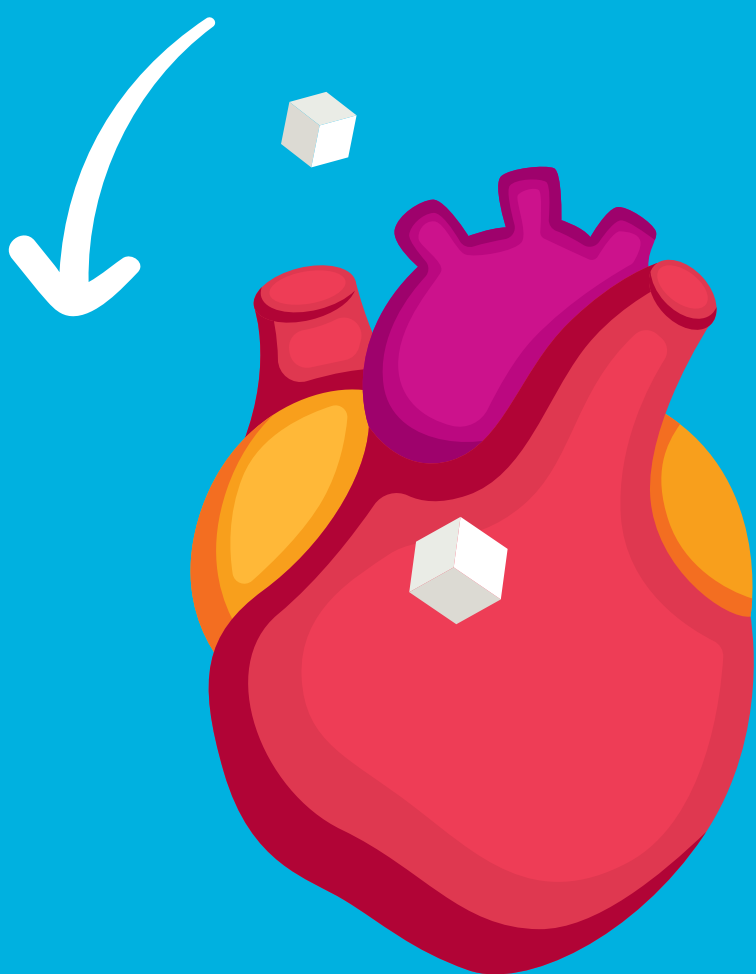
PANCREAS



PANCREAS PRODUCES INSULIN



INSULIN

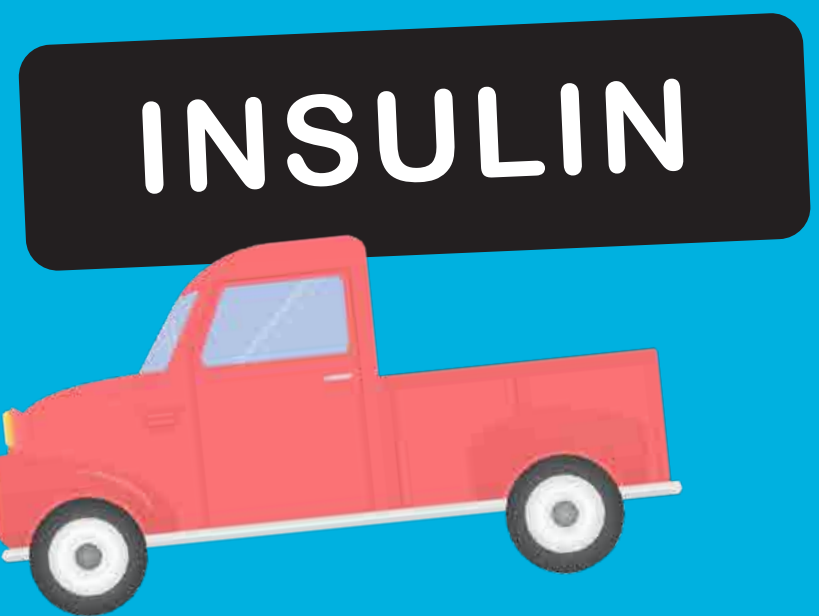


INSULIN TRANSPORTS THE GLUCOSE INTO
THE BODY'S CELLS THAT NEED IT.



WHAT IS TYPE 1 DIABETES?

GLUCOSE, THANKS TO INSULIN, GIVES YOUR BODY THE ENERGY IT NEEDS.





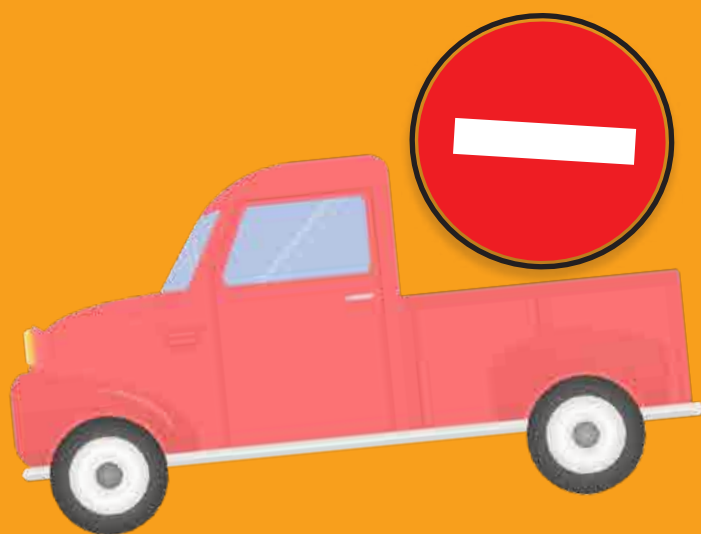
WHAT IS TYPE 1 DIABETES?

WHAT HAPPENS WHEN YOU HAVE TYPE 1 DIABETES

PANCREAS DOESN'T MAKE INSULIN



PANCREAS



NO INSULIN



BLOODSUGAR



GLUCOSE CANNOT BE TRANSPORTED TO THE CELLS SO THE BLOOD SUGAR LEVEL GOES TOO HIGH!



WHAT IS TYPE 1 DIABETES?

EXCESS OF SUGAR IN THE BLOOD
MAKES YOU SICK





WHAT IS TYPE 1 DIABETES?

WHAT ARE THE **COMMON SIGNS** OF TYPE 1 DIABETES?



FREQUENT URINATION



EXCESSIVE THIRST



ALWAYS HUNGRY



WHAT IS TYPE 1 DIABETES?

WHAT ARE THE **COMMON SIGNS** OF TYPE 1 DIABETES?



WEIGHT LOSS



ALWAYS TIRED

BLURRED VISION

